

# The Easter Vigil

## Responsorial Psalm 1, option B

RESPONSE

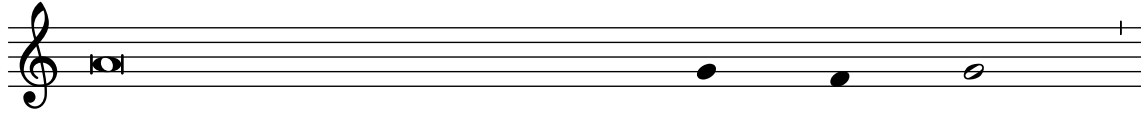
Psalm 33 (32): 5b



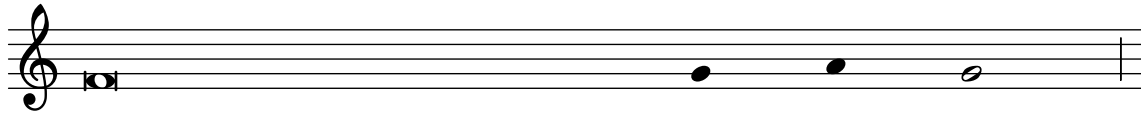
R. The earth is full of the good-ness of the Lord.

STANZAS Psalm Tone: 4

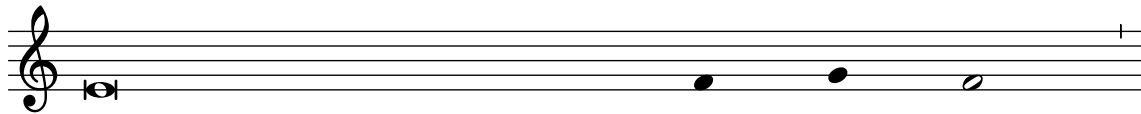
Psalm 33 (32): 4-5, 6-7, 12-13, 20+22



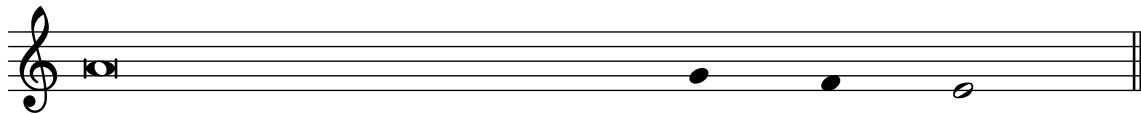
- |                              |      |      |          |
|------------------------------|------|------|----------|
| 1. The word of the           | Lord | is   | faithful |
| 2. By his word the heav      | ens  | were | made,    |
| 3. They are happy, whose God | is   | the  | Lord,    |
| 4. Our soul is waiting       | for  | the  | Lord.    |



- |                               |     |     |         |
|-------------------------------|-----|-----|---------|
| 1. and all his works          | to  | be  | trusted |
| 2. by the breath of his mouth | all | the | stars.  |
| 3. the people he has chosen   | as  | has | own.    |
| 4. The Lord is our help       | and | our | shield. |



- |                          |   |      |       |        |
|--------------------------|---|------|-------|--------|
| 1. The Lord loves jus    | - | tice | and   | right  |
| 2. He collects the waves |   | of   | the   | ocean; |
| 3. From the heavens the  |   | Lord | looks | forth, |
| 4. May your love be upon |   | us,  | O     | Lord,  |



- |                            |   |      |     |       |
|----------------------------|---|------|-----|-------|
| 1. and fills the earth     |   | with | his | love. |
| 2. he stores up the depths |   | of   | the | sea.  |
| 3. he sees all the chil    | - | dren | of  | men.  |
| 4. as we place all our     |   | hope | in  | you.  |

Response text: "Lectionary for Mass", © 1969, 1981, ICEL. All rights reserved.

Stanza text: "The Psalms: A New Translation", © 1963, The Grail (England). Published by HarperCollins. All rights reserved.

Music: [www.liturgysshare.org](http://www.liturgysshare.org); © 2022. All rights reserved. Licensed under a Creative Commons Attribution-Noncommercial 4.0 International License.